

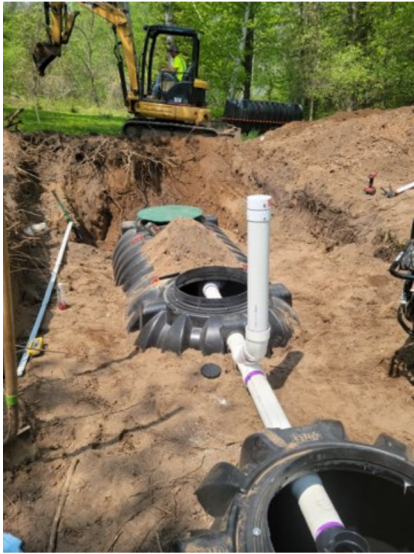
SEPTIC INSTALLATION ON FARM ISLAND

»»» THE PROBLEM

A 3-bedroom island property was purchased with a non-compliant septic system. Recognizing the need to meet current septic standards, the new owners embarked on the task of replacing the entire system. Designing, installing, and maintaining septic systems on islands can pose unique challenges. However, with meticulous planning and thoughtful consideration, we successfully designed and built a septic system that will endure for generations to come.



»»» THE SOLUTION



To preserve precious space on the property, we incorporated a pretreatment unit. This unit treats sewage inside the tank, eliminating the need to rely on the soil in the drainfield. Our choice for this project was the Infiltrator EcoPod E50 with UV light. The UV light technology reduces soil separation requirements, enabling us to keep the entire system below grade. This design not only maximizes space utilization but also ensures efficient sewage treatment.

Next, we selected three IM1060 polypropylene tanks from Infiltrator. These tanks offered the desired durability and functionality while being suitable for transportation by barge.

In addition, instead of utilizing washed drainfield rock, we opted for a product called EZflow, also from Infiltrator. EZflow offers numerous advantages as it is lightweight and easily maneuverable around the construction site. By incorporating EZflow, we streamlined the installation process and improved overall efficiency.



We secured transportation through JJ's Barge Service, a reputable provider based in Grand Rapids, MN. Their barge proved to be capable of handling the weight of our load, ensuring a smooth and efficient transportation process. Furthermore, they accommodated our schedule requirements, including coordinating the delivery of parts from our supplier directly to the boat landing.



»»» THE RESULTS

Our focus was to ensure compliance while creating a sustainable solution that aligns with the island's specific requirements. By overcoming the challenges associated with island septic systems, we have provided the new owners with a reliable and environmentally friendly system that will serve their property well into the future. With proper care and routine maintenance, the family will be able to enjoy time on the island without the extra worry of septic failure.